

## How Do I Listen to WOFR.org – Word of Faith Radio at Work (Behind a Firewall?)

If you would like to listen to **WOFR.org** at work, yet you are unable to because your workplace blocks all Internet ports except ports **80** and **443**, what do you do?

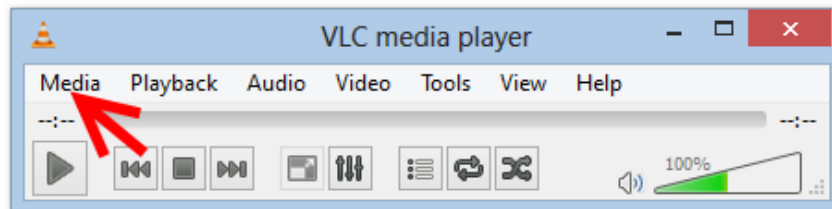
**Now, you have an option!**

Simply download and install the free **VideoLAN VLC Player** from this address:

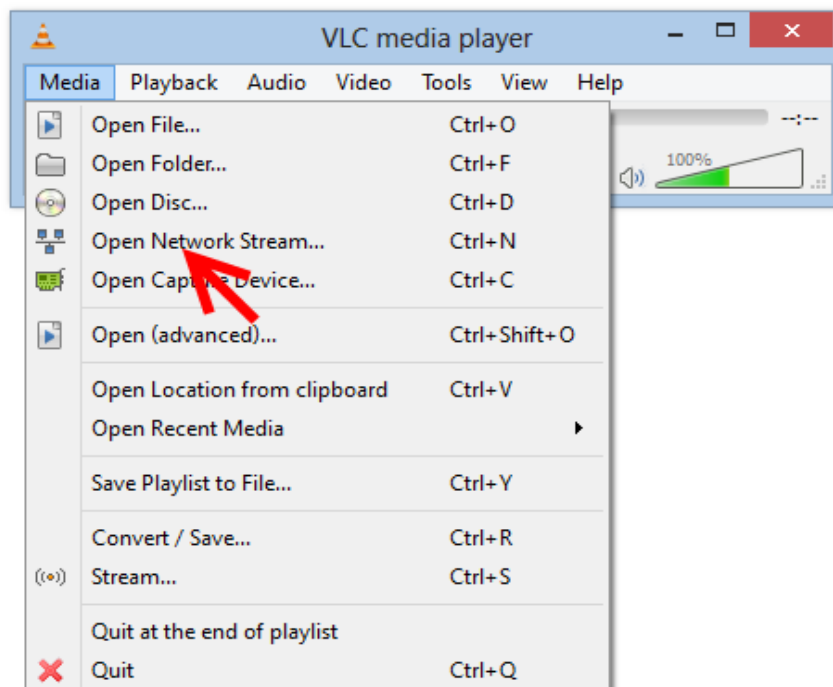
**<http://www.videolan.org/vlc/index.html>**

Once you download the installation file from the above address, just “double-click” on the file, and it will step you through a simple installation process. Just accept the defaults.

Once installed, you may “double-click” on the **VLC Player** icon (which looks like an orange and white “traffic cone”) and **VLC player** will start up. You will see a player that looks like this:

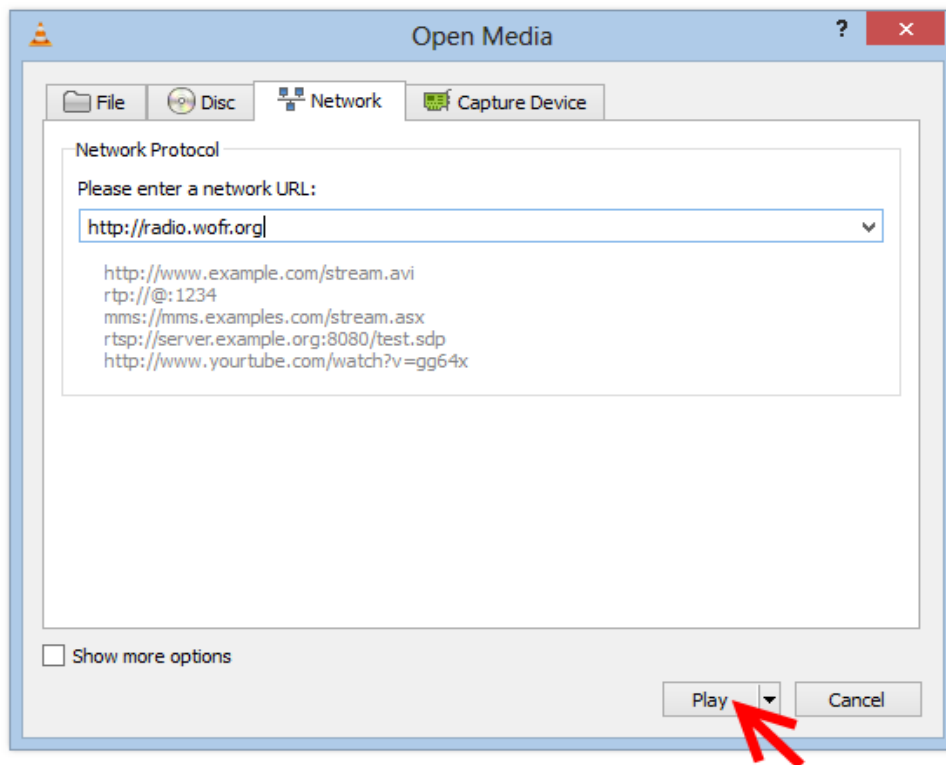


Click on the “**Media**” option, which is the first option on the control bar. You will then see this screen:



Select the “**Open Network Stream**” option from the “drop down” list as shown above.

Then, you will see this screen:



In the field marked “**Please enter a network URL:**” type in this address:

**http://radio.wofr.org**

for the Main Station...

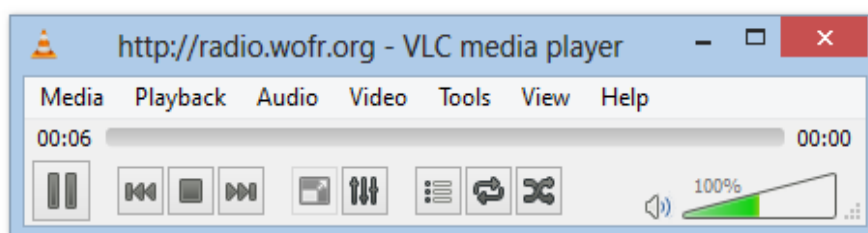
**http://healing.wofr.org**

for the Healing Station, or:

**http://kjb.wofr.org**

for the KJV Station.

Then click on the “**Play**” button at the bottom of the above screen. You should then hear our **WOFR.org Radio** programming start playing on your computer, and you will see this screen:



***Enjoy WOFR.org – Word of Faith Radio, and spread the word about our stations!***